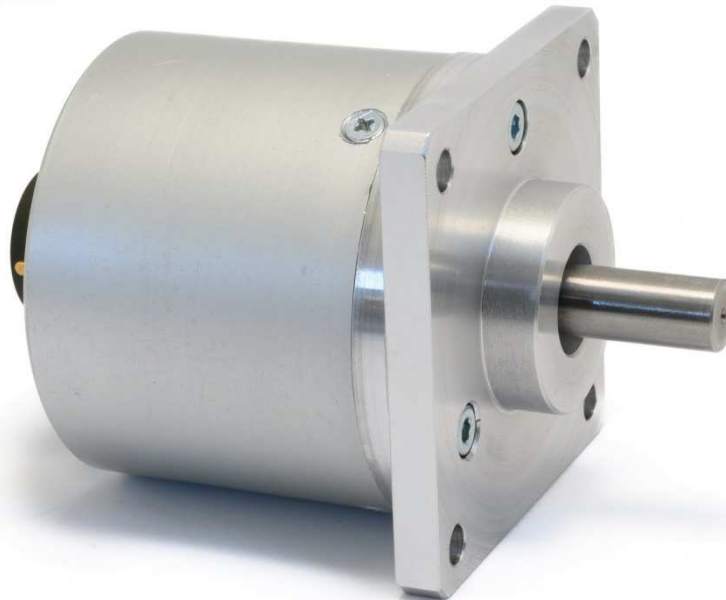


IP65CL 360 P/t PUSH-PULL

Absolute Encoder single-turn 360 P/t high precision



DESCRIPTION

This optical encoder, with resolution of 360 positions/turn binary code, was designed for industrial settings with high levels of disturbance and for all applications requiring exceptional mechanical reliability and excellent electronic precision.

The aluminium cap with axial connector guarantees protection rating IP65; parallel output push-pull, supports up to 40 m of cable.

MAIN FUTURES

N° of positions	360
N° of revolutions/minute (max)	6000
Output signals	<i>parallel push-pull</i>
Code	<i>binary</i>
Supply voltage	<i>10 – 30Vdc</i>
Current consumption	<i>80 – 120mA</i>
Output current (max)	<i>50 mA</i>
Protection type	<i>IP65</i>
Temperature range	<i>0 – 60°</i>
Case	<i>anodized alluminium</i>
Flange type	<i>square 65x65mm</i>
Shaft type	<i>∅ 10x19,5 mm stainless steel</i>
Starting torque	<i>≥ 2 Ncm</i>
Inertia	<i>≥ 80 g/cm²</i>
Connector type and position	<i>19 pin mil male axial</i>
Cable lenght (max)	<i>40mt</i>
Weight	<i>360 gr</i>

ELECTRICAL CONNECTIONS

PIN	DESIGNATIONS	DESCRIPTION
A	BIT 1	Output Data
B	BIT 2	Output Data
C	BIT 3	Output Data
D	BIT 4	Output Data
E	BIT 5	Output Data
F	BIT 6	Output Data
G	BIT 7	Output Data
H	BIT 8	Output Data
J	BIT 9	Output Data
T	GND	GND (0Vdc)
U	Rotation	Rotation
V	Supply Voltage	Supply Voltage (10 – 30Vdc)

TECHNICAL DRAWING

